

## MCQ Questions For Class 10 Science Ch - 6 Life Processes

Q1) In amoeba, food is digested in the:

- (a) food vacuole
- (b) mitochondria
- (c) pseudopodia
- (d) chloroplast

**Correct Answer:** Option (a)

Q2) In which of the following groups of organisms, food materials are broken down outside the body and absorbed?

- (a) Mushroom, green plants, Amoeba
- (b) Yeast, mushroom, bread mould
- (c) Paramecium, Amoeba, Cuscuta
- (d) Cuscuta, lice, tapeworm

**Correct Answer:** Option (b)

Q3) The contraction and expansion movement of the walls of the food pipe is called:

- (a) translocation
- (b) transpiration
- (c) peristaltic movement
- (d) digestion

**Correct Answer:** Option ©

Q4) What are the products obtained by anaerobic respiration in plants?

- (a) Lactic acid + Energy
- (b) Carbon dioxide + Water + Energy

- (c) Ethanol + Carbon dioxide + Energy
- (d) Pyruvate

**Correct Answer:** Option ©

Q5) When a few drops of iodine solution are added to rice water, the solution turns blue- black in colour. This indicates that rice water contains:

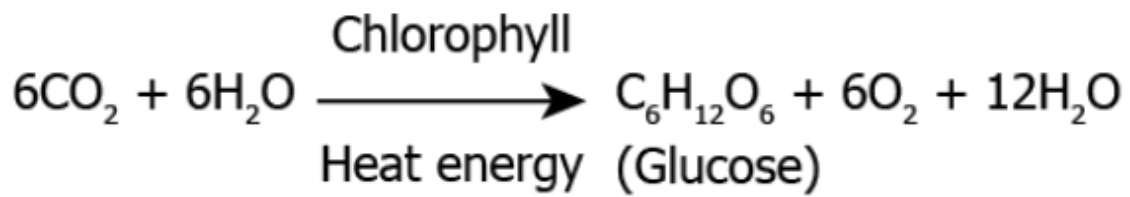
- (a) fats
- (b) complex proteins
- (c) starch
- (d) simple proteins

**Correct Answer:** Option ©

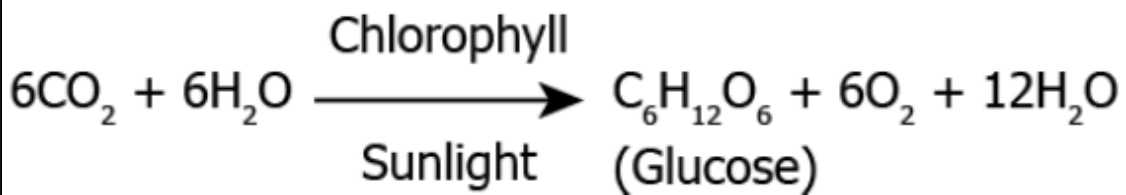
Q6) Which of the equations show correct conversion of CO<sub>2</sub> and H<sub>2</sub>O into carbohydrates in plants?

[www.Androbose.in](http://www.Androbose.in)

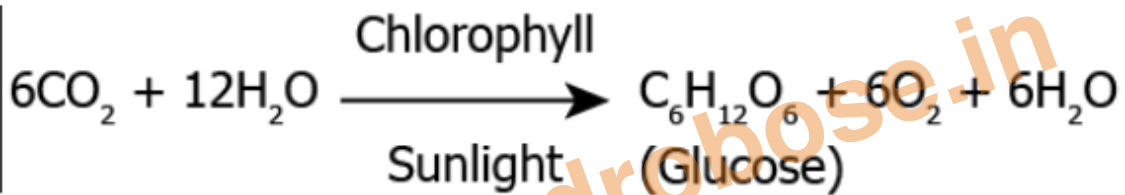
(a)



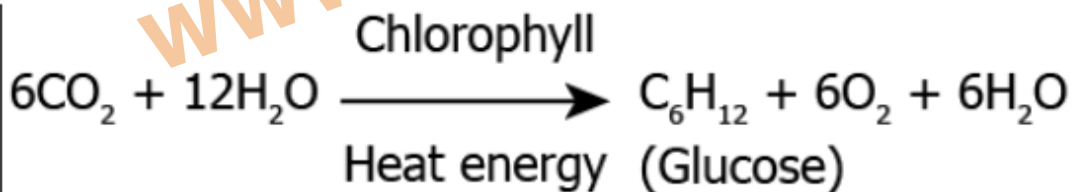
(b)



(c)



(d)



**Correct Answer:** Option (c)

Q7) The respiratory pigment in human beings is:

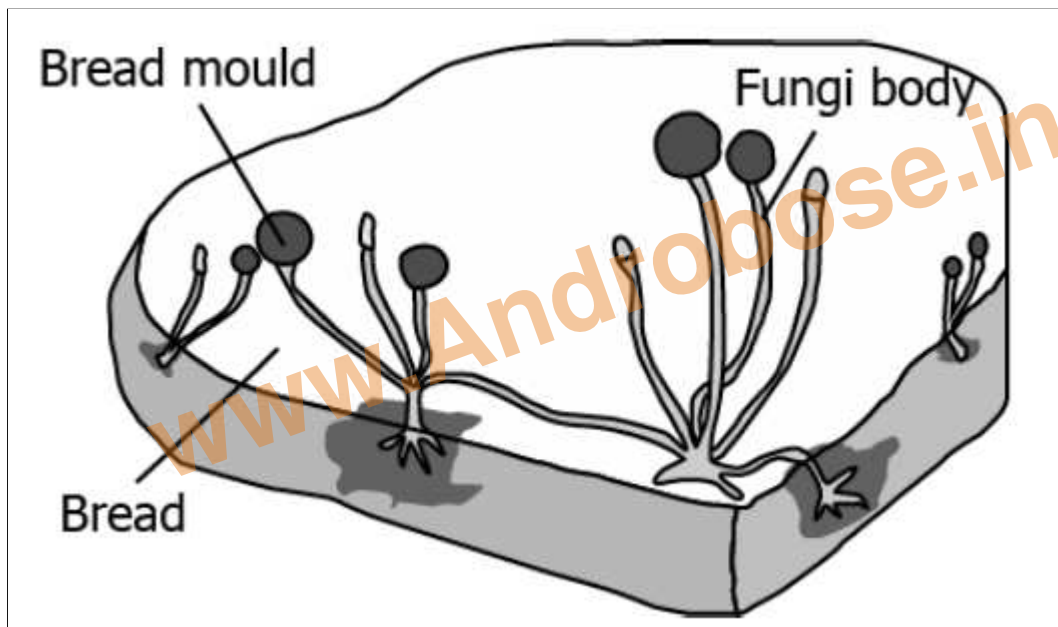
- (a) carotene
- (b) chlorophyll
- (c) haemoglobin
- (d) mitochondria

**Correct Answer:** Option C

- Q8) Which of the following is the important characteristic of Emphysema:
- (a) Destruction of the alveolar wall and air sacs in the lungs are damaged.
- (b) Increase in the growth of the lung tissue.
- (c) Inflammation in the wall of bronchi.
- (d) Thickening of the artery walls of the lungs.

**Correct Answer:** Option (a)

Q9) The image shows the bread moulds on a bread



How do these fungi obtain nutrition?

- (a) by eating the bread on which it is growing
- (b) by using nutrients from the bread to prepare their own food
- (c) by breaking down the nutrients of bread and then absorbing them
- (d) by allowing other organisms to grow on the bread and then consuming them

**Correct Answer:** Option (c)

Q10) The characteristic processes observed in anaerobic respiration are

- i) presence of oxygen
- ii) release of carbon dioxide
- iii) release of energy
- iv) release of lactic acid

- (a) i), ii) only
- (b) i), ii), iii) only
- (c) ii), iii), iv) only
- (d) iv) only

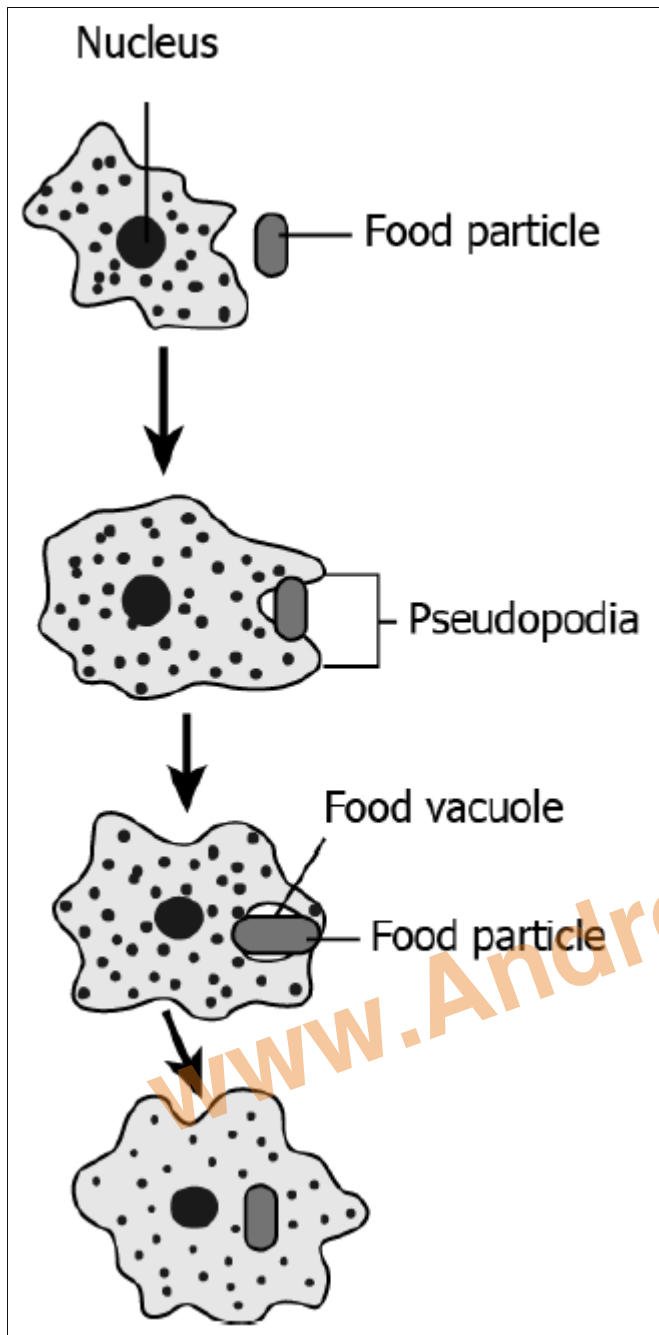
**Correct Answer:** Option (c)

Q11) The opening and closing of the stomatal pore depends upon

- (a) Oxygen
- (b) temperature
- (c) water in the guard cells
- (d) concentration of CO<sub>2</sub>

**Correct Answer:** Option (c)

Q12) The image shows how Amoeba obtains nutrition.



How is this process advantageous for Amoeba?

- (a) capturing of food takes less time
- (b) complex food can be digested easily
- (c) more amount of food can be consumed
- (d) fast distribution of nutrition within the body

**Correct Answer:** Option (d)

Q13) A plant gets rid of excess water through transpiration. Which is a method used by plants to get rid of solid waste products?

- (a) shortening of stem
- (b) dropping down of fruits
- (c) shedding of yellow leaves
- (d) expansion of roots into the soil

**Correct Answer:** Option (c)

Q14) Chemicals present in the tobacco smoke lead to the breakdown of the elastic tissue in the alveoli. Name this specific condition.

- (a) Heart disease
- (b) Emphysema
- (c) Bronchitis
- (d) Lung cancer

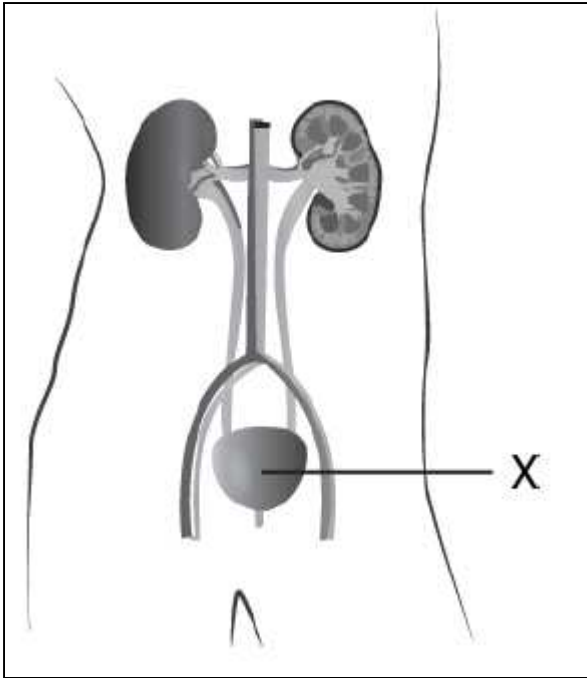
**Correct Answer:** Option (b)

Q15) Digestion of food starts from which organ of the human digestive system?

- (a) mouth due to the presence of saliva
- (b) oesophagus that moves the food in gut
- (c) that releases juices for fat breakdown
- (d) which helps in mixing food with digestive juices

**Correct Answer:** Option (a)

Q16) The image shows the excretory system in humans.



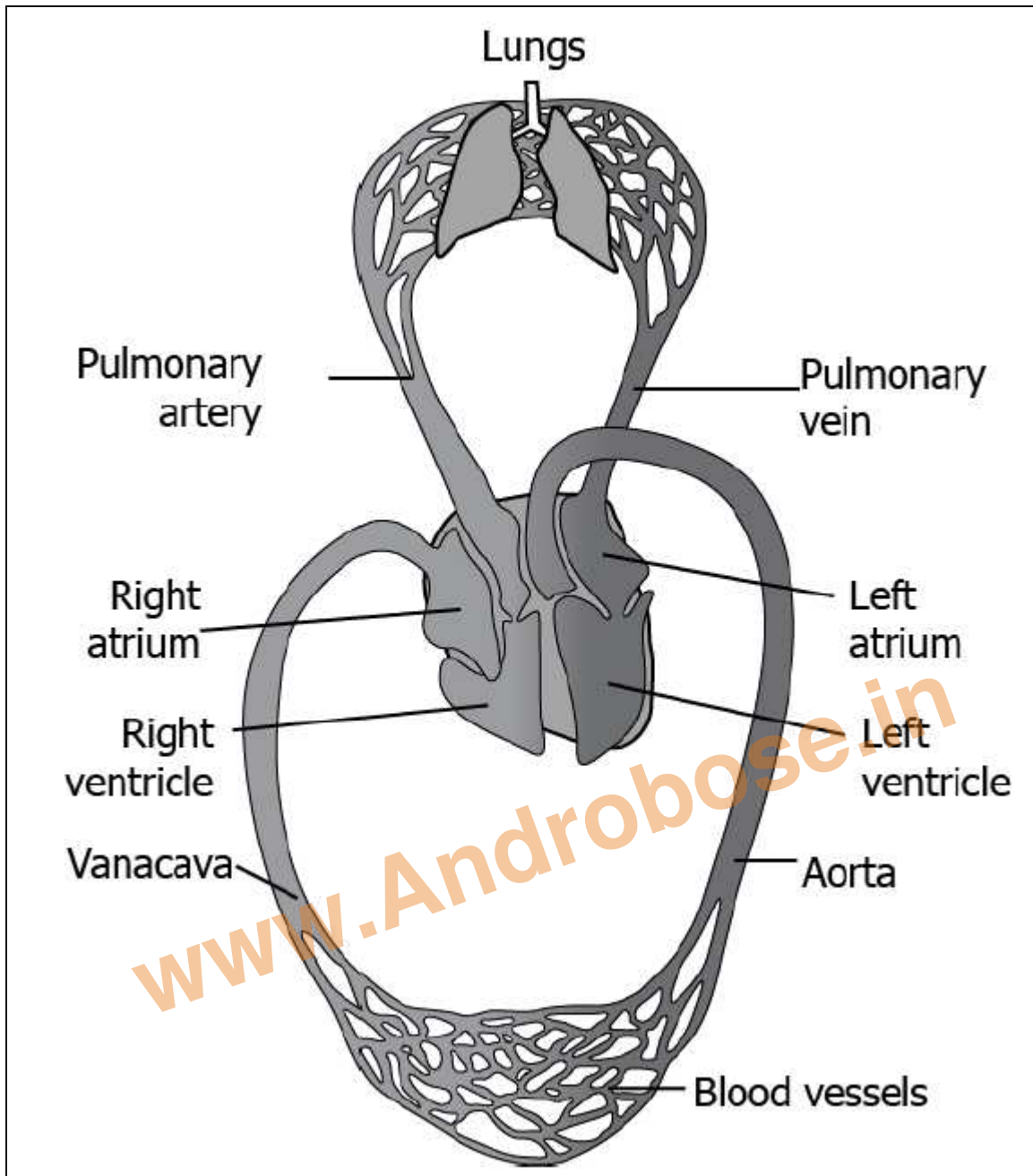
What is the importance of the labelled part in the excretory system?

- (a) It produces urine.
- (b) It filters waste from the blood.
- (c) It stores the urine till urination.
- (d) It carries urine from the kidney to the outside.

**Correct Answer:** Option (c)

Q17) The image shows the transport of gases in the body through the heart and lungs.





Which option correctly shows the transport of oxygen to the cell?

1. (a) Lungs → pulmonary vein → left atrium → left ventricle → aorta → body cells
2. (b) Lungs → pulmonary vein → right atrium → right ventricle → aorta → body cells
3. (c) Lungs → pulmonary artery → left atrium → left ventricle → vena cava → body cells
4. (d) Lungs → pulmonary artery → right atrium → right ventricle → vena cava → body cells

**Correct Answer:** Option (a)

Q18) What is the percentage of the oxygen in the expired air when a person is resting:

- (a) 12%
- (b) 16%
- (c) 20%
- (d) 24%

**Correct Answer:** Option (b)

Q19) How is food transported from phloem to the tissues according to plants' needs?

- (a) food is transported along with the water in the plant's body.
- (b) food is transported in only direction like water in the plant body through xylem.
- (c) food is transported from a region with low concentration to higher concentration.
- (d) food is transported from a region where it is produced to other parts of the plants.

**Correct Answer:** Option (d)

Q20) Which is the correct sequence of body parts in the human alimentary canal?

- (a) Mouth → stomach → small intestine → large intestine → oesophagus
- (b) Mouth → oesophagus → stomach → small intestine → large intestine
- (c) Mouth → stomach → oesophagus → small intestine → large intestine
- (d) Mouth → oesophagus → stomach → large intestine → small intestine

**Correct Answer:** Option (b)

**Thank You Download More Mcq Notes Follow us And Visit on**

## SOCIAL

=====

 - Blog: - <https://androbose.in/>

 - Telegram: - <https://t.me/androbose>

 - Facebook: - <https://www.facebook.com/androbose.in/>

 - Twitter: - [https://twitter.com/Andro\\_Bose](https://twitter.com/Andro_Bose)

 - Pinterest: - <https://in.pinterest.com/Androbose/>

 - Instagram; - <https://www.instagram.com/androbose/>

 - Quiz: - <https://quiz.androbose.in/>

[www.Androbose.in](http://www.Androbose.in)

<https://t.me/androbose>

<https://www.facebook.com/androbose.in/>

[www.Androbose.in](http://www.Androbose.in)